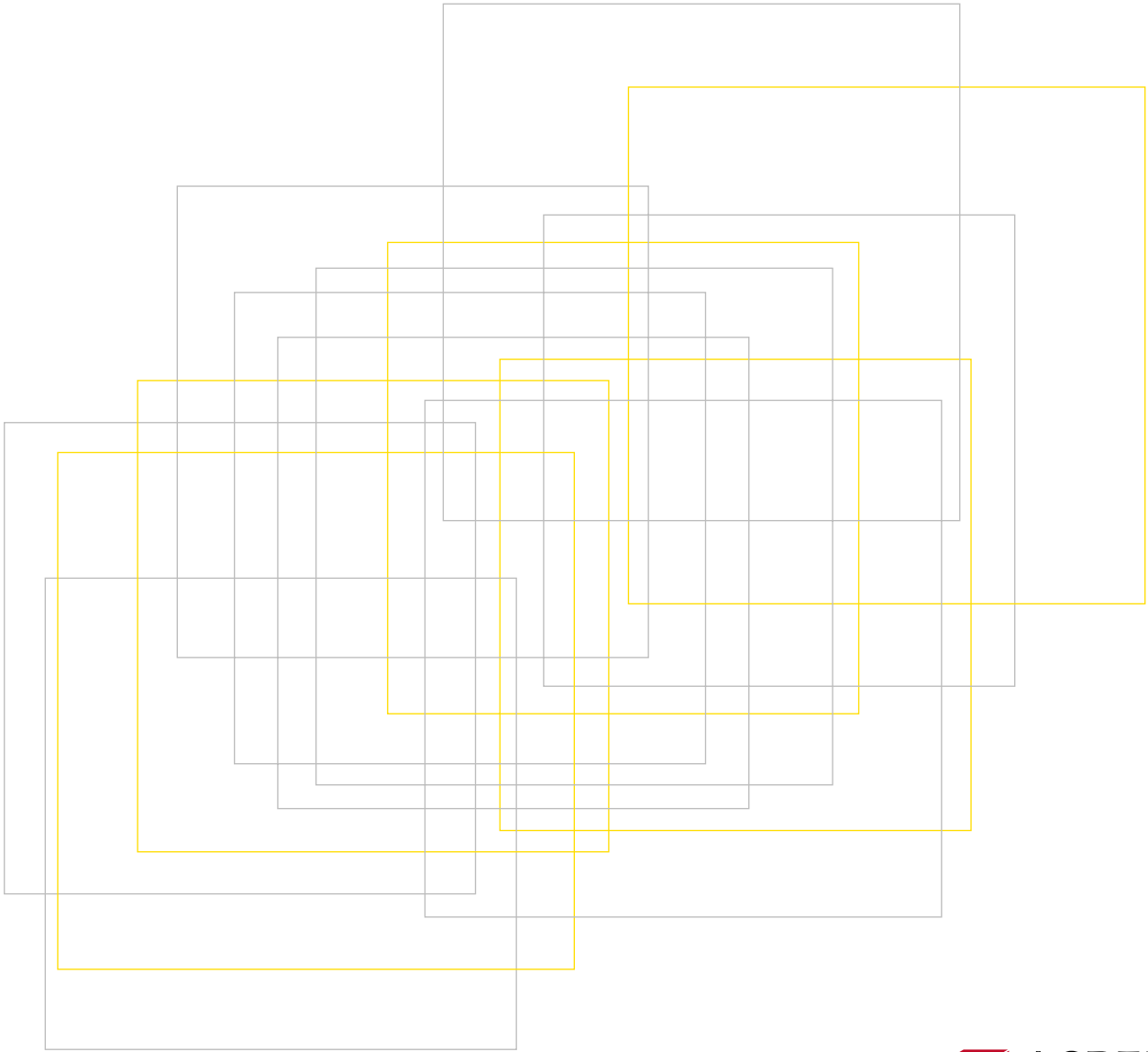




LED AYDINLATMA SİSTEMLERİ

LED LIGHTING SYSTEMS





TAVAN KONUSUNA AYDINLIK GETİRİYORUZ!

Lumuner LED Aydınlatma Sistemleri, 60x60 cm standart asma tavan sistemleri başta olmak üzere tüm metal, alçıpan, ahşap ve taşıyıcı asma tavan uygulamalarına akılcı çözümler sunmak için tasarlandı. Asma tavan panelleri ile bütünlük olarak üretilen aydınlatma sistemleri, son kullanıma hazır, kolay montajlanabilen, tak-çalıştır ürünler sunuyor. Standart ve özel tüm sistemlerle görsel bütünlük sağlayabilecek ürün çeşitliliğine sahip; konsept mimari projelerde ihtiyaca özel inovatif tasarım desteği veren; hızlı üretim avantajı sunan; çevreci, ekonomik ve uzun ömürlü Lumuner LED Aydınlatma Sistemleri ile siz de tanışın. Projelerinizi aydınlığa taşıyın.

BRIGHTEN YOUR PROJECTS WITH LUMUNER!

Lumuner LED lighting systems are especially designed for 60x60cm standard suspended ceiling systems and also for all metal, wood, drywall and mineral fiber ceiling systems. Lighting systems that are integrated with suspended ceiling panels introduces products that can be easily assembled and are plug-and-play. Meet Lumuner LED lighting systems that has variety of products that can be visually integrated with standard and special systems; supports the conceptual architectural projects; are rapidly produced; are environmentally friendly, economic and durable. Brighten your projects with Lumuner.

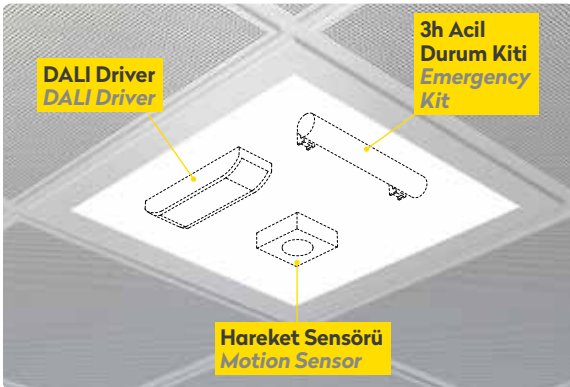




+ DALI KONTROL
DALI CONTROL

+ ACİL DURUM
AYDINLATMA
INTEGRATED
EMERGENCY
LIGHTING UNIT

+ HAREKET SENSÖRÜ
MOTION SENSOR



LUMUNER İLE OTOMATİK OLARAK İÇİNİZ RAHAT!

Lumuner LED Aydınlatma Sistemleri, bina otomasyonuna uyum sağlayan teknik özellikleri ile mimari projelerinize özel çözümler sunmaya devam ediyor.

Siz de;

- DALI Sistem ile kontrol edilebilen ve istenildiğinde dim edilebilen (aydınlık seviyeleri ayarlanabilen),
- Acil durumlarda, şebeke kaynaklı elektrik kesintilerinde 1 veya 3 saat kapasiteli bataryası ile aydınlatmaya devam edebilen,
- DALI KONTROL ve Acil Durum Aydınlatma Çözümleri'ni tüm modeller ve taşıyıcı tipleri için uygulayabilen Lumuner LED Aydınlatma Sistemleri ile tanışın; projelerinizi aydınlığa taşıyın.

AUTOMATIC CONFIDENCE WITH LUMUNER!

Lumuner LED Lighting fixtures are compatible to be integrated with building automation systems, which is inevitable for modern architectural projects.

- Luminaires can be controlled by DALI system for dimming.
- In case of an emergency, luminaires will continue to work by battery power, which enables evacuation (1 to 3 hours).
- All systems (DALI, ELU and MOTION SENSOR) can be applied to each model in our product range.





Baffle Led

TEKNİK ÖZELLİKLER SPECIFICATIONS

Gerilim / Voltage	220 - 240V AC; 50 - 60 Hz
Işık Akısı / Luminous Flux	>900lm : > 1800lm
Güç / Power	13.5W; 27W
Malzeme / Material	MDF Lam, ahşap kaplama veya masif ahşap lata MDF, wood veneer or solid wood baffle

LED	DIM Option	DALI Option	PFC >0.9	CRI ≥80	IP 20	
					2-4 Years Warranty	

Ürünümüz **Endüstriyel Tasarım Tescil Belgesi** ile koruma altındadır.
Design of our product is under protection with Industrial Design Registration Certificate of Patent Institute.





Split Line 40

Clip in Plakalara Entegre Kesintisiz Armatür
Continuous Linear LED Lighting Integrated into Clip in Tiles
(600 - 1200 - 1800 - 2400mm)

TEKNİK ÖZELLİKLER SPECIFICATIONS

Gerilim / Voltage	220 - 240V AC; 50 - 60 Hz
Işık Akısı / Luminous Flux	1000lm; 2000lm; 3000lm; 4000lm
Güç / Power	14W; 27W; 40W; 54W
Malzeme / Material	Galvaniz Sac; Alüminyum Levha Galvanized Steel; Aluminium Sheet

LED	DIM Option	DALI Option	PFC >0.9	CRI ≥80	IP 40	3500K 4000K 5000K 6500K
Recycling	CE	Grounding	Hg	Pb	2-4 Years Warranty	

Ürünümüz **Endüstriyel Tasarım Tescil Belgesi** ile koruma altındadır.
Design of our product is under protection with Industrial Design Registration Certificate of Patent Institute.



T24 Led

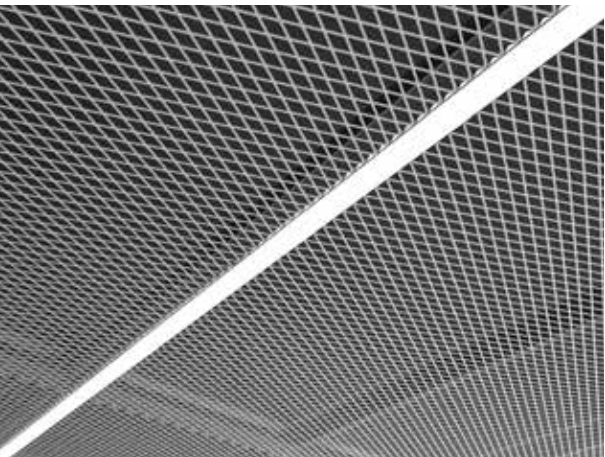
LED'li T Taşıyıcı Profil / T Profile LED Luminaire
(600-1200mm Tali Taşıyıcı Yerine)
(Functions as 600 and 1200mm T24 Cross Runner)

TEKNİK ÖZELLİKLER SPECIFICATIONS

Gerilim / Voltage	220 - 240V AC; 50 - 60 Hz
Işık Akısı / Luminous Flux	1000lm; 2000lm
Güç / Power	14W; 28W
Malzeme / Material	Alüminyum ekstrüzyon profil Aluminium extrusion profile

LED	DIM Option	DALI Option	PFC >0.9	CRI ≥80	IP 20	
					2-4 Years Warranty	





Hook On Led

TEKNİK ÖZELLİKLER SPECIFICATIONS

Gerilim / Voltage 220 - 240V AC; 50 - 60 Hz

Işık Akısı / Luminous Flux > 2000lm

Güç / Power 27W

Malzeme / Material Alüminyum ekstrüzyon profil
Aluminium extrusion profile

LED	DIM Option	DALI Option	PFC >0.9	CRI ≥80	IP 40	

Ürünümüz **Endüstriyel Tasarım Tescil Belgesi** ile koruma altındadır.
Design of our product is under protection with Industrial Design Registration Certificate of Patent Institute.





Insolita

TEKNİK ÖZELLİKLER SPECIFICATIONS

Gerilim / Voltage	220 - 240V AC; 50 - 60 Hz
Işık Akısı / Luminous Flux	3000lm ; 5700lm
Güç / Power	31W ; 60W
Malzeme / Material	Galvaniz Sac; Alüminyum Levha Galvanized Steel; Aluminium Sheet





Box Line 40

TEKNİK ÖZELLİKLER SPECIFICATIONS

Gerilim / Voltage 220 - 240V AC; 50 - 60 Hz

Işık Akısı / Luminous Flux 2000lm; 3000lm; 4000lm

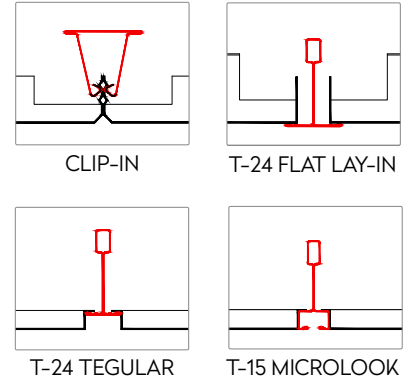
Güç / Power 27W; 40W; 54W

Malzeme / Material Alüminyum ekstrüzyon profil
Aluminium extrusion profile

LED	DIM Option	DALI Option	PFC >0.9	CRI ≥80	IP 40	



TAŞIYICI TİPLERİ SUSPENSION TYPES



DiĞER UYGULAMALAR OTHER APPLICATIONS

- SIVA ALTI / RECESSED
- SIVA ÜSTÜ / SURFACE MOUNTED

Expanded Zone

TEKNİK ÖZELLİKLER SPECIFICATIONS

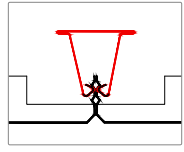
Gerilim / Voltage	220 - 240V AC; 50 - 60 Hz
Işık Akısı / Luminous Flux	3200lm
Güç / Power	32W
Malzeme / Material	Galvaniz Sac; Alüminyum Levha Galvanized Steel; Aluminium Sheet



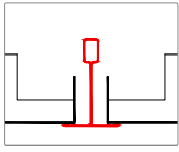
Ürünümüz **Endüstriyel Tasarım Tescil Belgesi** ile koruma altındadır.
Design of our product is under protection with Industrial Design Registration
Certificate of Patent Institute.



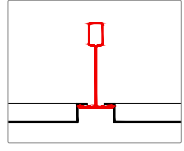
TAŞIYICI TİPLERİ
SUSPENSION TYPES



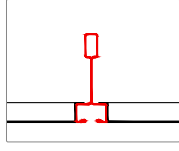
CLIP-IN



T-24 FLAT LAY-IN



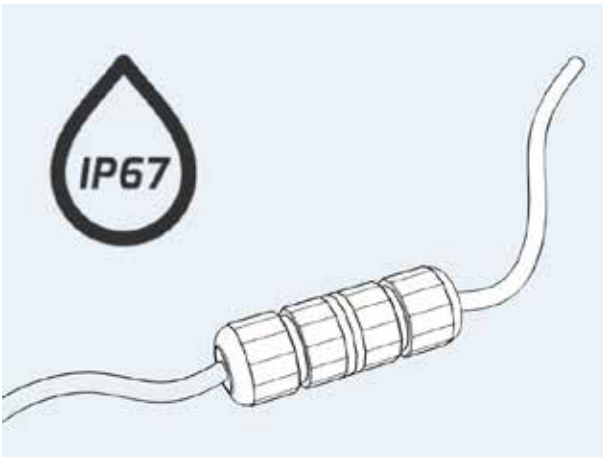
T-24 TEGULAR



T-15 MICROLOOK

DİĞER UYGULAMALAR
OTHER APPLICATIONS

- SIVA ALTI / RECESSED
- SIVA ÜSTÜ / SURFACE MOUNTED



Tile Line 1 Proof
(IP67)

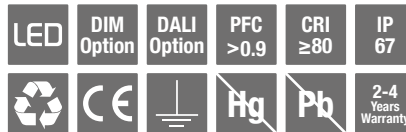
TEKNİK ÖZELLİKLER SPECIFICATIONS

Gerilim / Voltage 220 - 240V AC; 50 - 60 Hz

Işık Akısı / Luminous Flux 4000lm; 5000lm; 6000lm

Güç / Power 40W; 50W; 60W

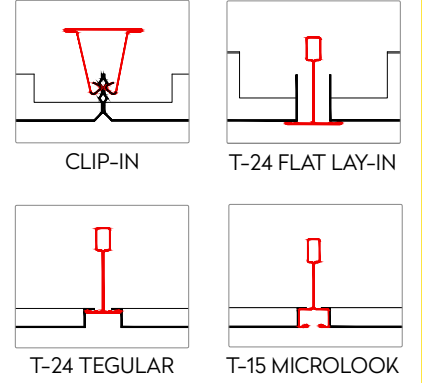
Malzeme / Material Galvaniz Sac; Alüminyum Levha
Galvanized Steel; Aluminium Sheet



Ürünümüz **Endüstriyel Tasarım Tescil Belgesi** ile koruma altındadır.
Design of our product is under protection with Industrial Design Registration Certificate of Patent Institute.



TAŞIYICI TİPLERİ SUSPENSION TYPES



DiĞER UYGULAMALAR OTHER APPLICATIONS

- SIVA ALTI / RECESSED
- SIVA ÜSTÜ / SURFACE MOUNTED

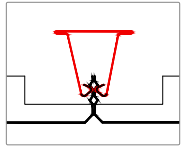
Tile Zone 54S

TEKNİK ÖZELLİKLER SPECIFICATIONS

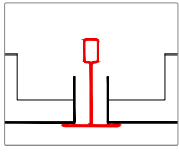
Gerilim / Voltage	220 - 240V AC; 50 - 60 Hz
Işık Akısı / Luminous Flux	2700lm; 3500lm
Güç / Power	35W; 33W
Malzeme / Material	Galvaniz Sac; Alüminyum Levha Galvanized Steel; Aluminium Sheet



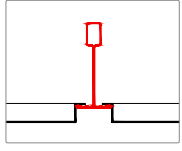
TAŞIYICI TİPLERİ
SUSPENSION TYPES



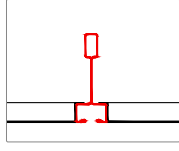
CLIP-IN



T-24 FLAT LAY-IN



T-24 TEGULAR



T-15 MICROLOOK

DİĞER UYGULAMALAR
OTHER APPLICATIONS

- SIVA ALTI / RECESSED
- SIVA ÜSTÜ / SURFACE MOUNTED



Tile Zone 48S

TEKNİK ÖZELLİKLER SPECIFICATIONS

Gerilim / Voltage 220 - 240V AC; 50 - 60 Hz

Işık Akısı / Luminous Flux 3200lm

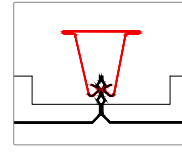
Güç / Power 32W

Malzeme / Material Galvaniz Sac; Alüminyum Levha
Galvanized Steel; Aluminium Sheet

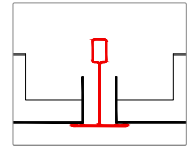




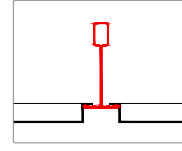
TAŞIYICI TİPLERİ SUSPENSION TYPES



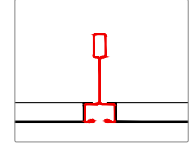
CLIP-IN



T-24 FLAT LAY-IN



T-24 TEGULAR



T-15 MICROLOOK

DİĞER UYGULAMALAR OTHER APPLICATIONS

- SIVA ALTI / RECESSED
- SIVA ÜSTÜ / SURFACE MOUNTED

Tile Zone 40S

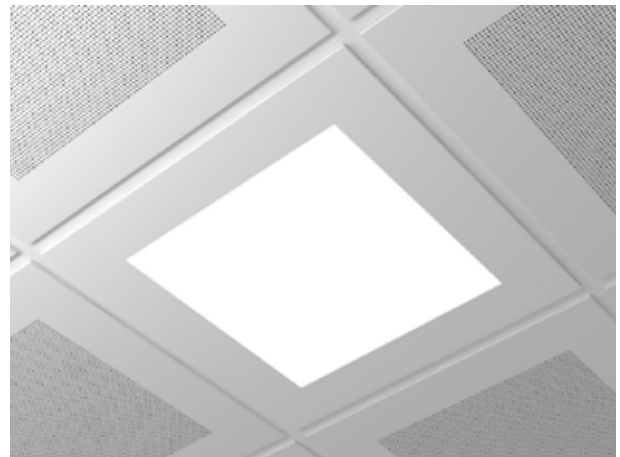
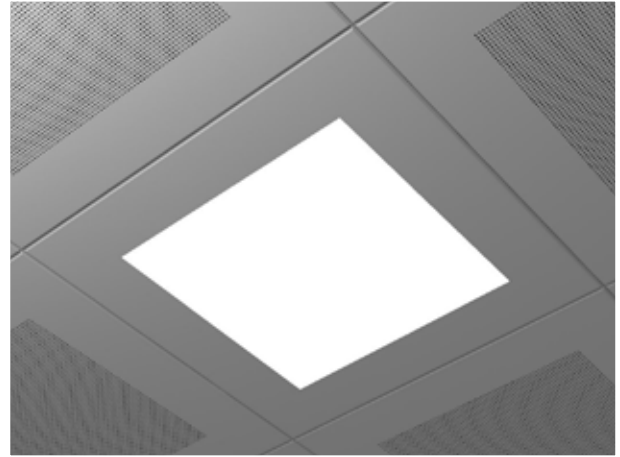
TEKNİK ÖZELLİKLER SPECIFICATIONS

Gerilim / Voltage 220 - 240V AC; 50 - 60 Hz

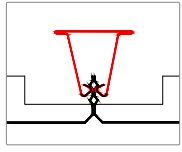
Işık Akısı / Luminous Flux 2800lm

Güç / Power 28W

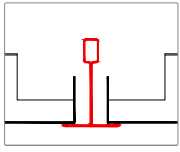
Malzeme / Material Galvaniz Sac; Alüminyum Levha
Galvanized Steel; Aluminium Sheet



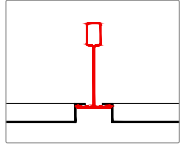
TAŞIYICI TİPLERİ
SUSPENSION TYPES



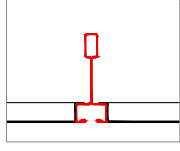
CLIP-IN



T-24 FLAT LAY-IN



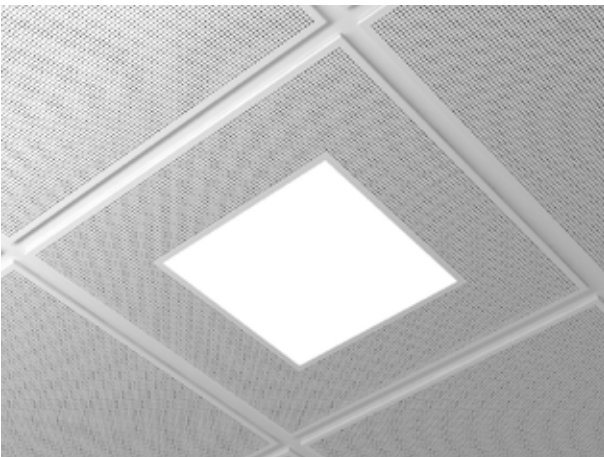
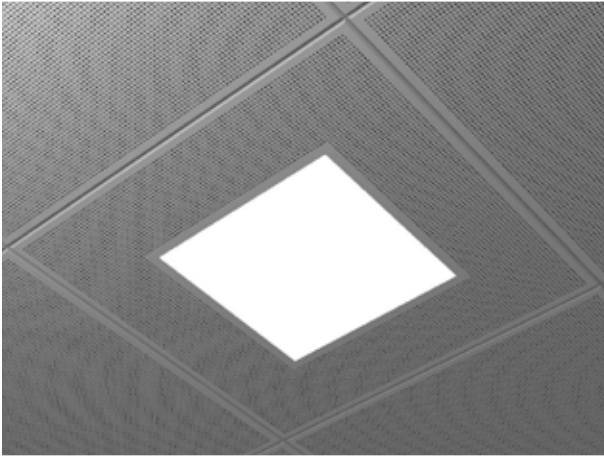
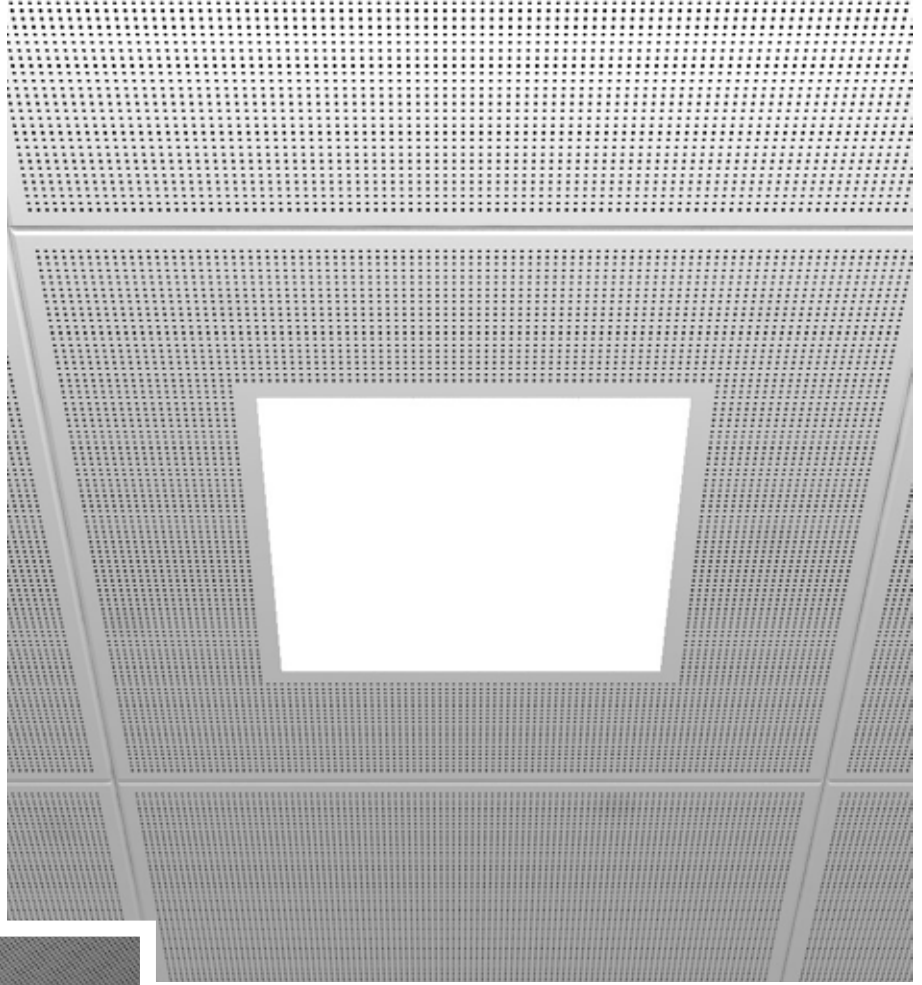
T-24 TEGULAR



T-15 MICROLOOK

DİĞER UYGULAMALAR
OTHER APPLICATIONS

- SIVA ALTI / RECESSED
- SIVA ÜSTÜ / SURFACE MOUNTED



Tile Zone 30S

TEKNİK ÖZELLİKLER SPECIFICATIONS

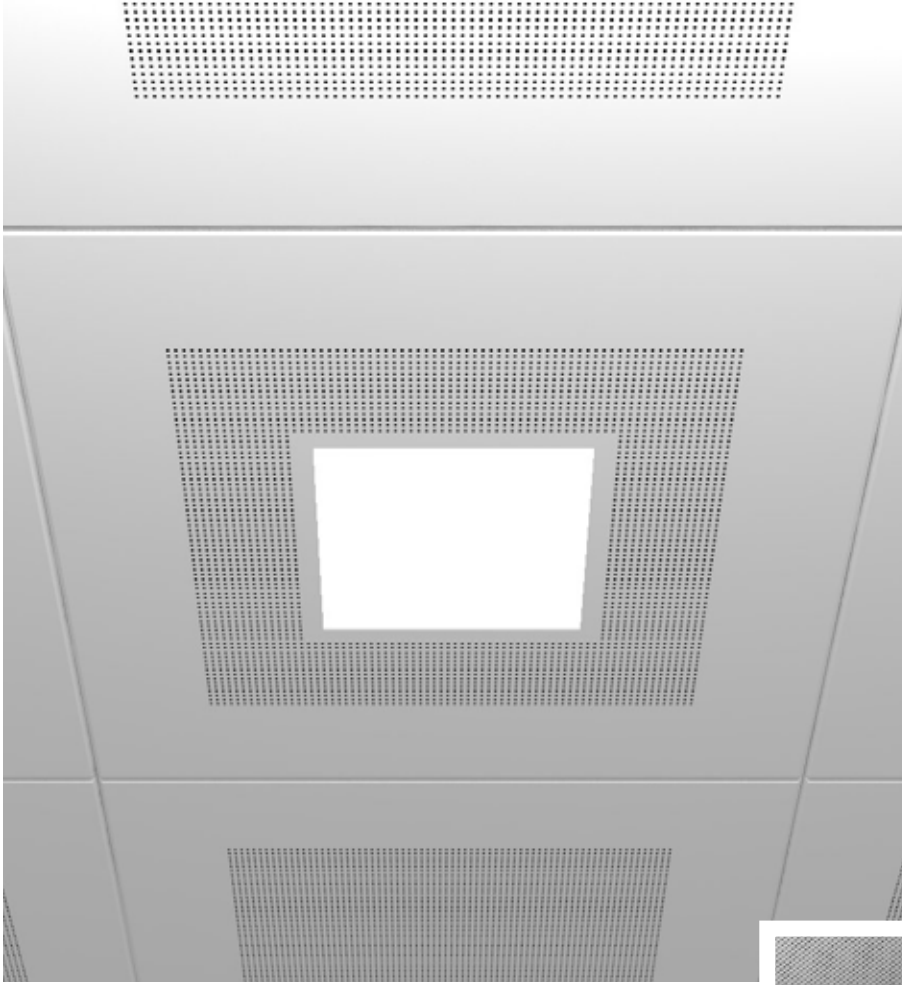
Gerilim / Voltage 220 - 240V AC; 50 - 60 Hz

Işık Akısı / Luminous Flux 2400lm

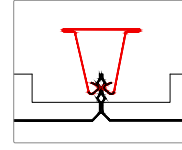
Güç / Power 24W

Malzeme / Material Galvaniz Sac; Alüminyum Levha
Galvanized Steel; Aluminium Sheet

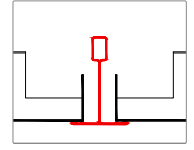




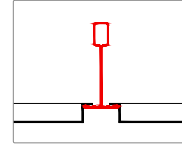
TAŞIYICI TİPLERİ SUSPENSION TYPES



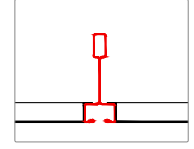
CLIP-IN



T-24 FLAT LAY-IN



T-24 TEGULAR



T-15 MICROLOOK

DiĞER UYGULAMALAR OTHER APPLICATIONS

- SIVA ALTI / RECESSED
- SIVA ÜSTÜ / SURFACE MOUNTED

Tile Zone 20S

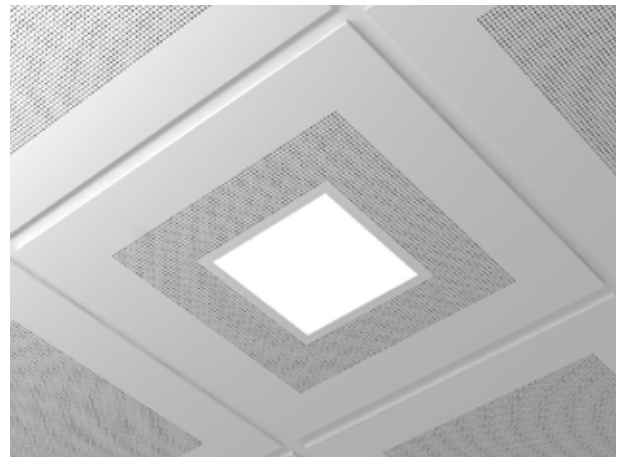
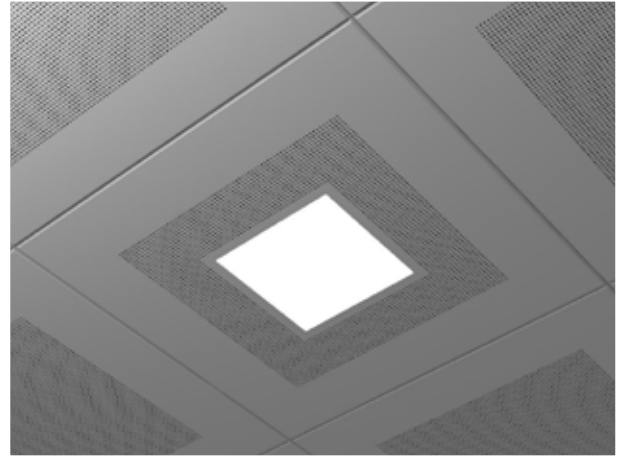
TEKNİK ÖZELLİKLER SPECIFICATIONS

Gerilim / Voltage 220 - 240V AC; 50 - 60 Hz

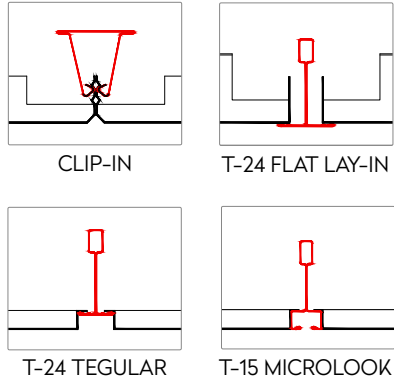
Işık Akısı / Luminous Flux 2400lm

Güç / Power 24W

Malzeme / Material Galvaniz Sac; Alüminyum Levha
Galvanized Steel; Aluminium Sheet



TAŞIYICI TİPLERİ
SUSPENSION TYPES



DİĞER UYGULAMALAR
OTHER APPLICATIONS

- SIVA ALTI / RECESSED
- SIVA ÜSTÜ / SURFACE MOUNTED
- HOOK-ON
- HOOK-ON CORRIDOR
- PERSPEKTA



Plank Line 1

TEKNİK ÖZELLİKLER SPECIFICATIONS

Gerilim / Voltage 220 - 240V AC; 50 - 60 Hz

Işık Akısı / Luminous Flux > 2700lm

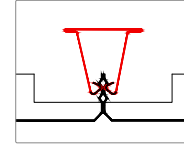
Güç / Power 27W

Malzeme / Material Galvaniz Sac; Alüminyum Levha
Galvanized Steel; Aluminium Sheet

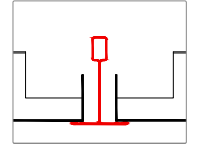




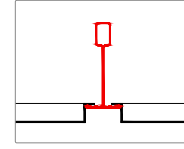
TAŞIYICI TİPLERİ SUSPENSION TYPES



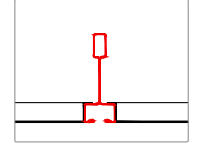
CLIP-IN



T-24 FLAT LAY-IN



T-24 TEGULAR



T-15 MICROLOOK

DiĞER UYGULAMALAR OTHER APPLICATIONS

- SIVA ALTI / RECESSED
- SIVA ÜSTÜ / SURFACE MOUNTED

Tile Line 1

TEKNİK ÖZELLİKLER SPECIFICATIONS

Gerilim / Voltage 220 - 240V AC; 50 - 60 Hz

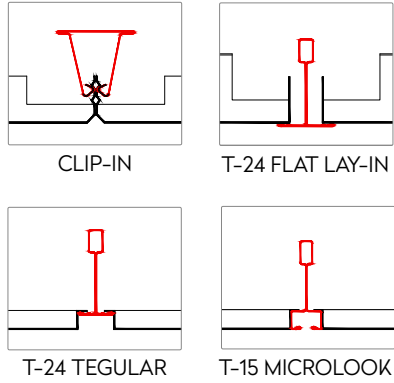
Işık Akısı / Luminous Flux 2700lm

Güç / Power 27W

Malzeme / Material Galvaniz Sac; Alüminyum Levha
Galvanized Steel; Aluminium Sheet



TAŞIYICI TİPLERİ
SUSPENSION TYPES



DİĞER UYGULAMALAR
OTHER APPLICATIONS

- SIVA ALTI / RECESSED
- SIVA ÜSTÜ / SURFACE MOUNTED



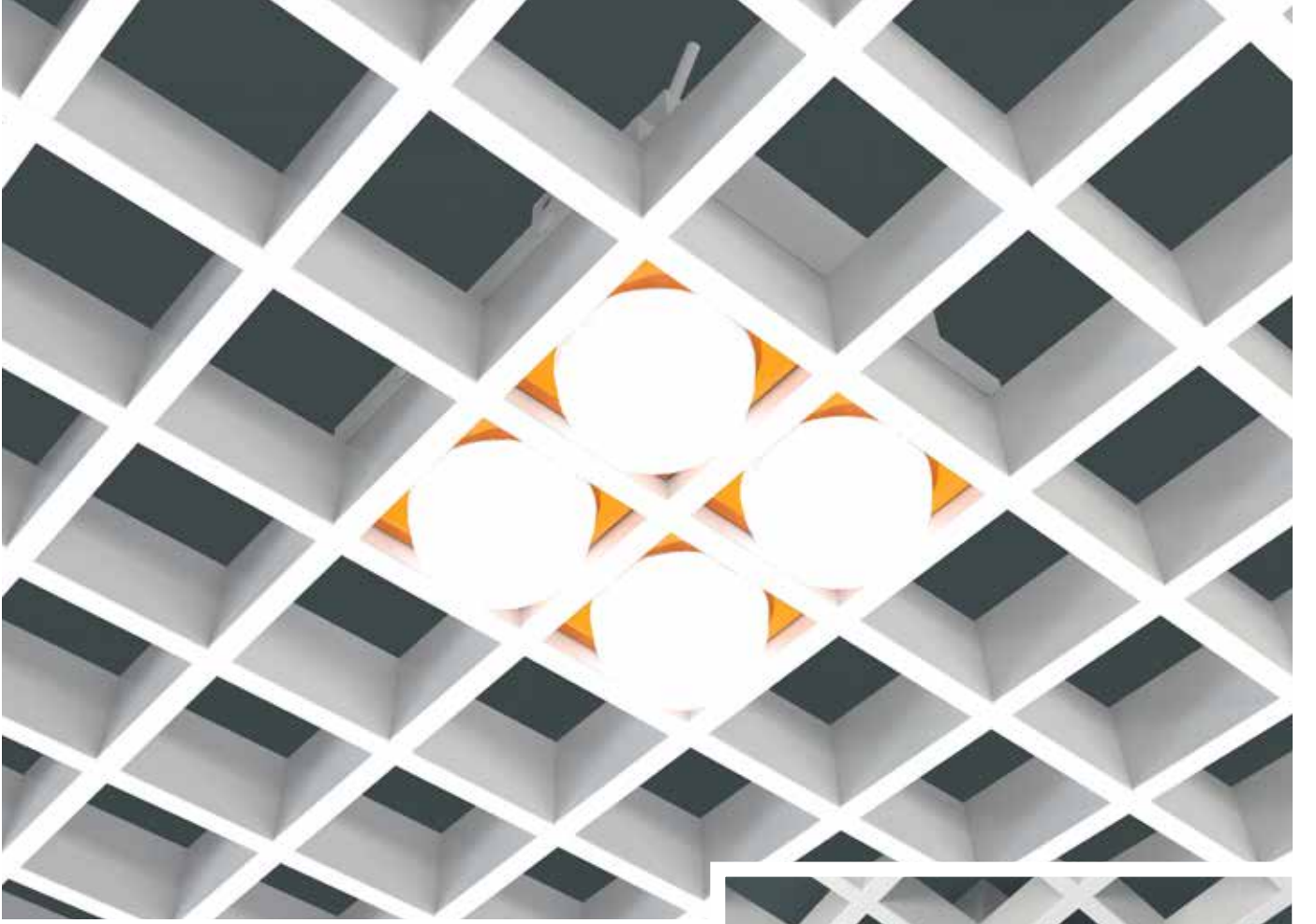
Tile Dot 99C
Tile Dot 99S

TEKNİK ÖZELLİKLER SPECIFICATIONS

Gerilim / Voltage	220 - 240V AC; 50 - 60 Hz
Işık Akısı / Luminous Flux	2200lm
Güç / Power	28W
Malzeme / Material	Galvaniz Sac; Alüminyum Levha Galvanized Steel; Aluminium Sheet

LED	DIM Option	DALI Option	PFC >0.9	CRI ≥80	IP 40	
					2-4 Years Warranty	

Ürünümüz **Endüstriyel Tasarım Tescil Belgesi** ile koruma altındadır.
Design of our product is under protection with Industrial Design Registration Certificate of Patent Institute.



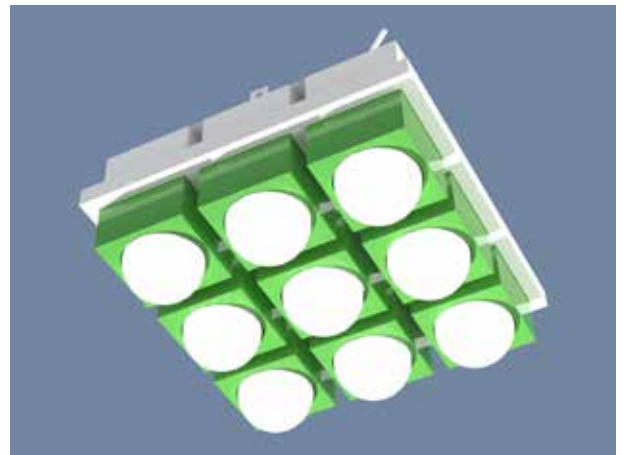
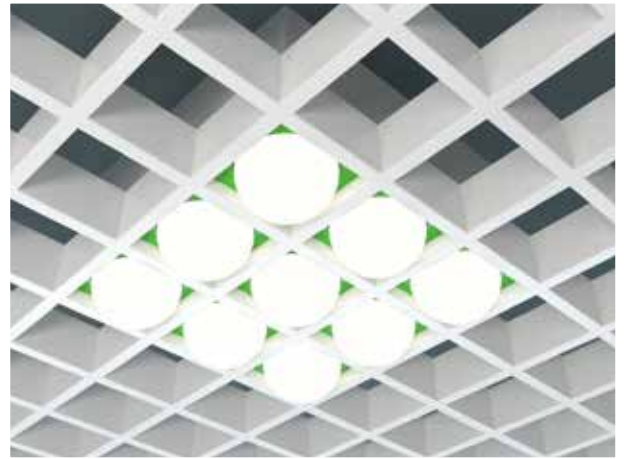
Open Dot 22S Open Dot 33S

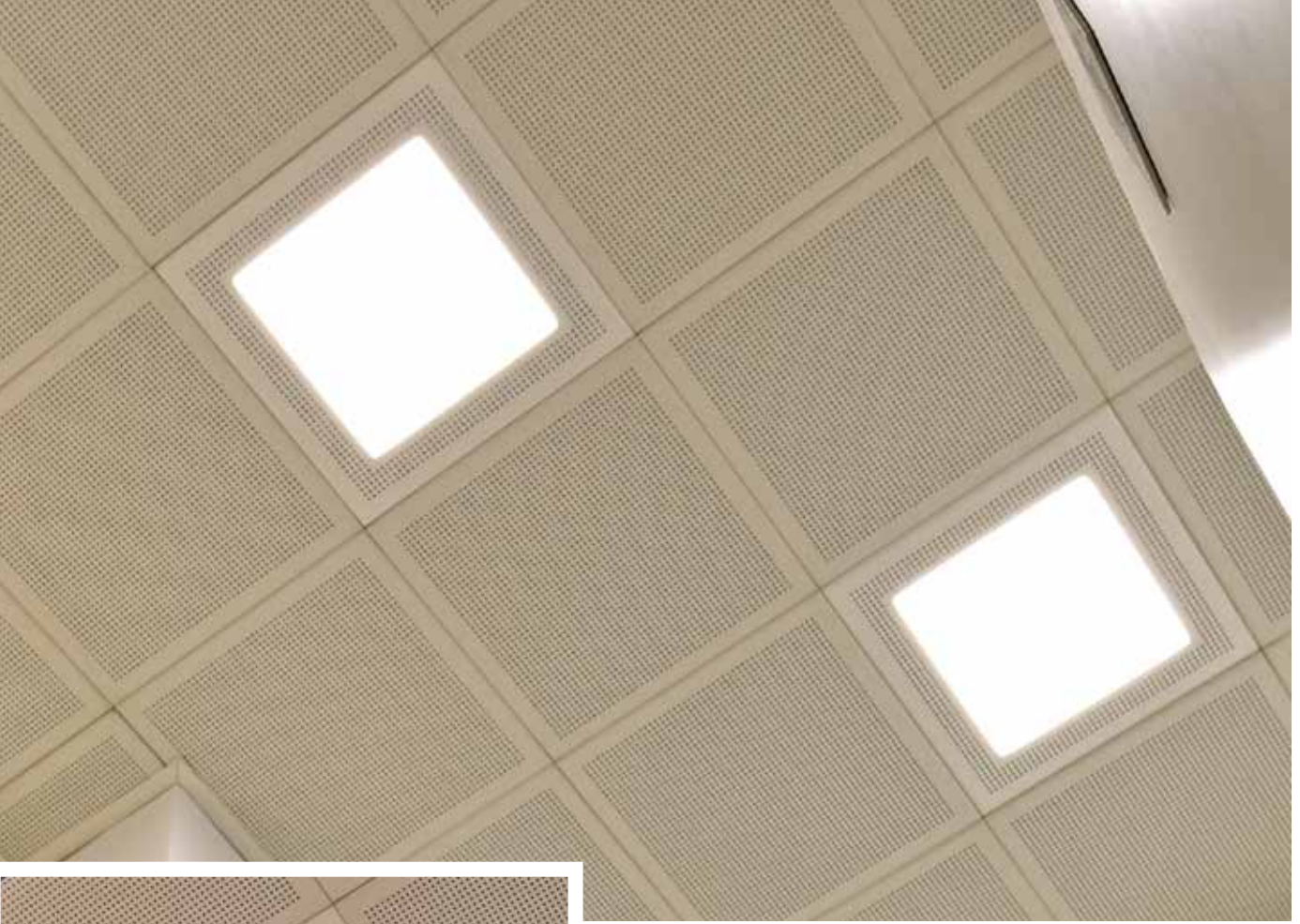
TEKNİK ÖZELLİKLER SPECIFICATIONS

Gerilim / Voltage	220 - 240V AC; 50 - 60 Hz
Işık Akısı / Luminous Flux	2400lm; 5400lm
Güç / Power	27W; 58W
Malzeme / Material	Galvaniz Sac; Alüminyum Levha Galvanized Steel; Aluminium Sheet

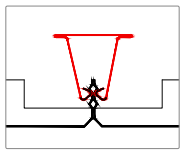
LED	DIM Option	DALI Option	PFC >0.9	CRI ≥80	IP 40	
					2-4 Years Warranty	

Ürünümüz **Endüstriyel Tasarım Tescil Belgesi** ile koruma altındadır.
Design of our product is under protection with Industrial Design Registration Certificate of Patent Institute.





TAŞIYICI TİPLERİ
SUSPENSION TYPES



CLIP-IN

Gladis Zone (30x30 / 30x60)

TEKNİK ÖZELLİKLER SPECIFICATIONS

Gerilim / Voltage 220 - 240V AC; 50 - 60 Hz

Işık Akısı / Luminous Flux 1750lm

Güç / Power 18W

Malzeme / Material Galvaniz Sac; Alüminyum Levha
Galvanized Steel; Aluminium Sheet





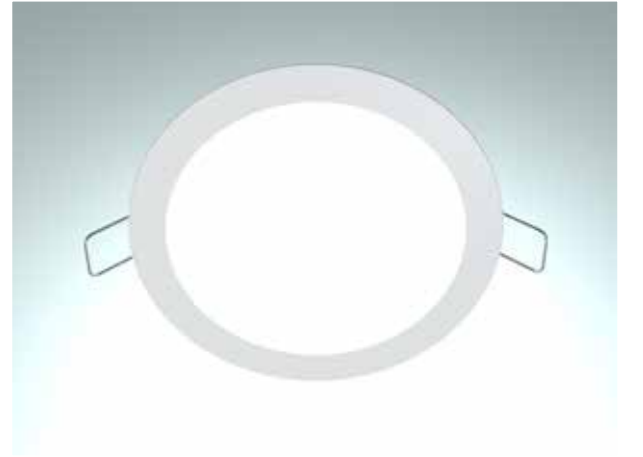
Downlight

Boyutlar: 75 / 100 / 150 / 200 mm

Dimensions: 2,5" / 4" / 6" / 8"

TEKNİK ÖZELLİKLER SPECIFICATIONS

Gerilim / Voltage	220 - 240V AC; 50 - 60 Hz
Işık Akısı / Luminous Flux	750lm; 1000lm; 1500lm; 2000lm
Güç / Power	7W; 10W; 15W; 20W;
Malzeme / Material	Alüminyum Kasa Aluminium Body



TAŞIYICI TİPLERİ SUSPENSION TYPES

- SIVA ALTI / RECESSED





TAŞIYICI TİPLERİ
SUSPENSION TYPES

- SIVA ÜSTÜ / SURFACE MOUNTED

Powerline

IP65 Endüstriyel Armatür
IP65 Industrial Luminaire

TEKNİK ÖZELLİKLER SPECIFICATIONS

Gerilim / Voltage 220 - 240V AC; 50 - 60 Hz

Işık Akısı / Luminous Flux 1750lm; 3500lm; 5250lm

Güç / Power 17,5W; 35W; 52W

Malzeme / Material Alüminyum Ekstrüzyon Profil
Aluminium Extrusion Profile





Etanj Armatür (IP65)

Waterproof Luminaire (IP65)

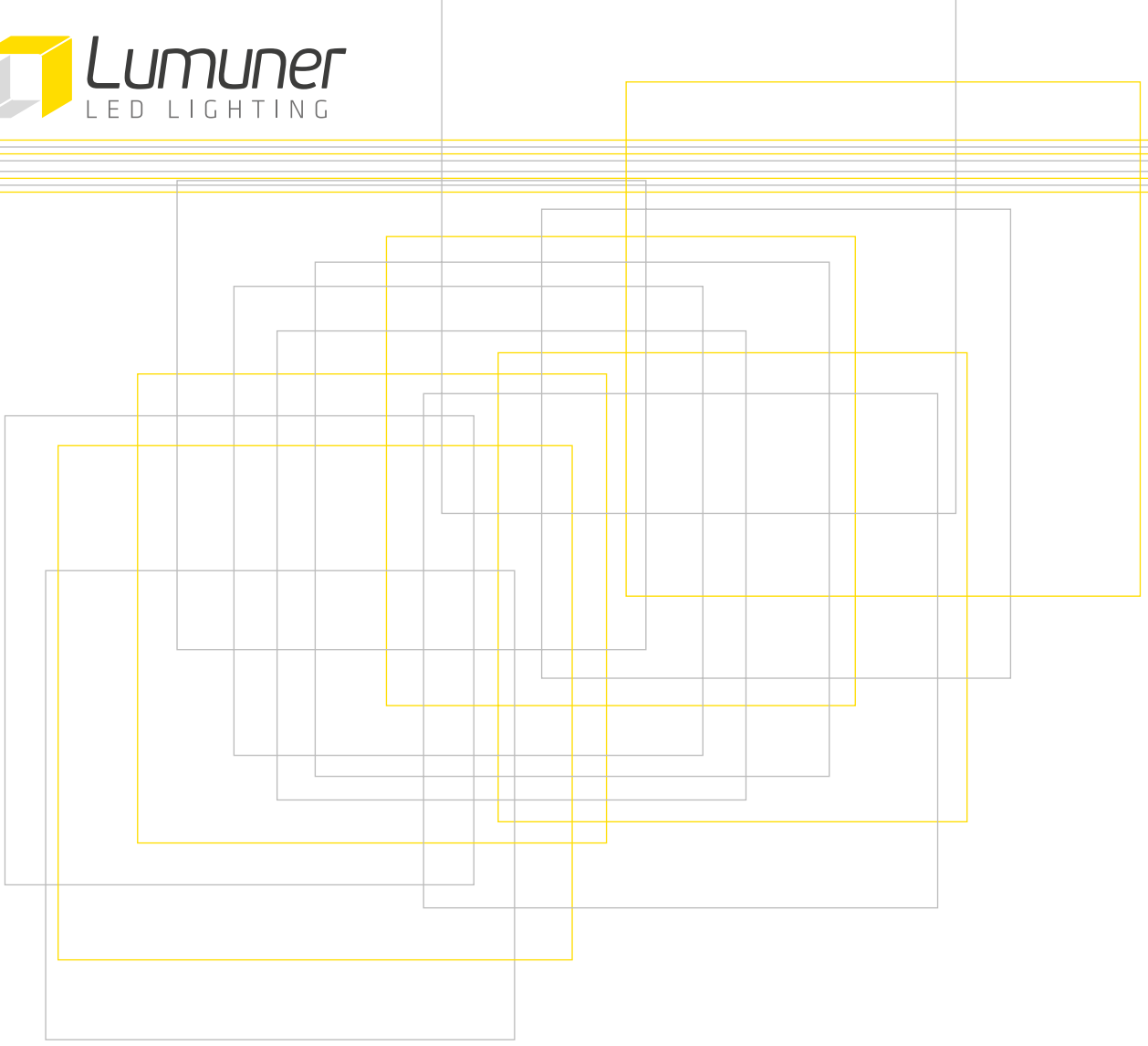
TEKNİK ÖZELLİKLER SPECIFICATIONS

Gerilim / Voltage	220 - 240V AC; 50 - 60 Hz
Işık Akısı / Luminous Flux	1100lm; 2200lm; 3300lm; 4400lm
Güç / Power	11W; 22W; 33W; 44W
Malzeme / Material	Plastik Enjeksiyon Gövde Plastic Injection Body

TAŞIYICI TİPLERİ SUSPENSION TYPES

- SIVA ÜSTÜ / SURFACE MOUNTED

LED	DIM Option	DALI Option	PFC >0.9	CRI ≥80	IP 65	
						



Aspen Yapı ve Zemin Sistemleri Sanayi ve Ticaret A.Ş.

Genel Müdürlük / Head Office:

Leylak Sokak, Murat İş Merkezi, B Blok, Kat: 3/14 Mecidiyeköy 34387 İSTANBUL - TÜRKİYE

Tel: +90 212 318 88 88 (pbx) **Faks / Fax:** +90 212 275 36 84

14999343 | LUMUNER AYDINLATMA BROŞÜRÜ
07.2016 | www.FikirKahvesi.com.tr



AspenYapiZemin

www.lumuner.com
www.aspen.com.tr